

# RELAY TESTERS

The **ECI 911** series of relay testers offer jobsite portability or use as a dedicated bench tester, for the majority of plug-in relays commonly used in the Elevator industry. The relay testers provide accurate testing on the most common relay bases and offer six different coil voltages for checking both AC/DC relays. Relays can be tested for open, shorted and welded contacts while providing three different contact resistant ranges to include, low (5 ohms), medium (15 ohms) and high (30 ohms), in order to identify marginally operating relays.

## MODEL: 911 YT (SUPPORTS' IBM RELAY TESTING)

### Specifications:

Part Number: ECIA045.00011371

Input Voltage: 120VAC (2A GMA Fuse)

### Relay Types:

P&B K10 - 2PDT (or equivalent) P&B KUP - 3PDT (or equivalent)

P&B KHU - 4PDT (or equivalent)

P&B R10 - 4PDT (or equivalent) Latching and Non - latching

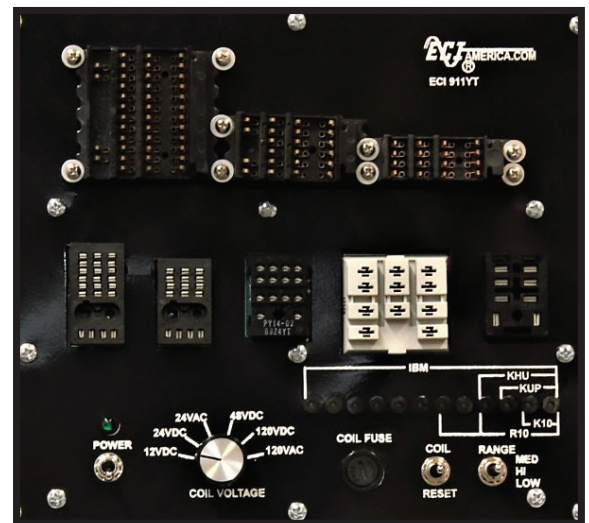
P&B R10 - 6PDT (or equivalent) Latching and Non - latching

IBM - 4PDT, 6PDT, 12PDT Latching and Non - latching

### Coil Voltages:

12VDC, 24VAC, 24VDC, 48VDC, 110VDC, 120VAC

## 911YT RELAY TESTER



## MODEL: 911 EZ

### Specifications:

Part Number: ECIA045.00011221 Input Voltage: 120VAC (2A GMA Fuse)

### Relay Types:

P&B K10 - 2PDT (or equivalent)

P&B KUP - 3PDT (or equivalent)

P&B KHU - 4PDT (or equivalent)

P&B R10 - 4PDT (or equivalent) Latching and Non- latching

P&B R10 - 6PDT (or equivalent) Latching and Non- latching

### Coil Voltages:

12VDC, 24VAC, 24VDC, 48VDC, 110VDC, 120VAC

## 911EZ RELAY TESTER



FORM 18 REVISED 12/17

**REQUEST YOUR FREE QUOTE**

Sales@ECIAmerica.com • (800) 633-9788

**ELEVATE YOUR BUSINESS**

www.ECIAmerica.com



BOARDS



LIGHTING



REPAIR



PRODUCTS